

id verde



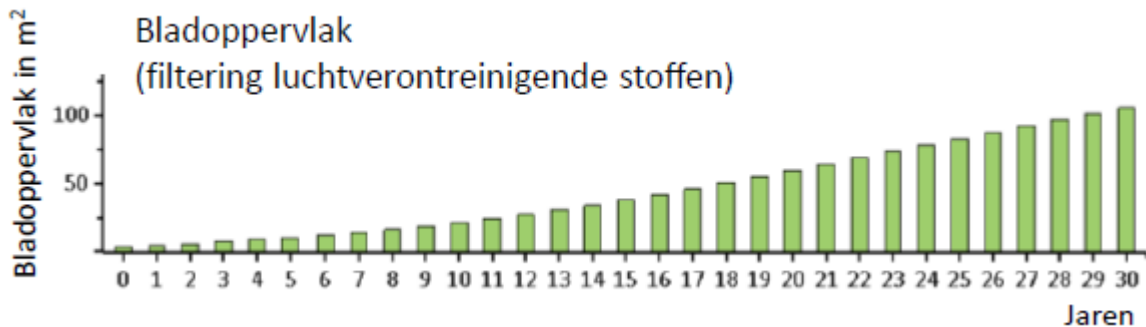
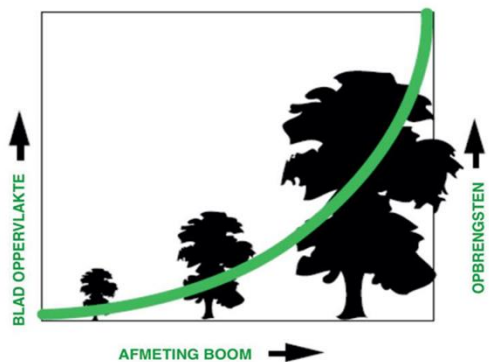
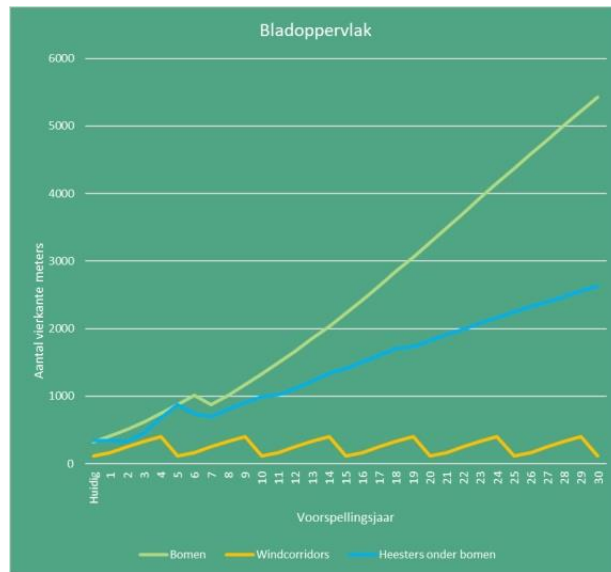
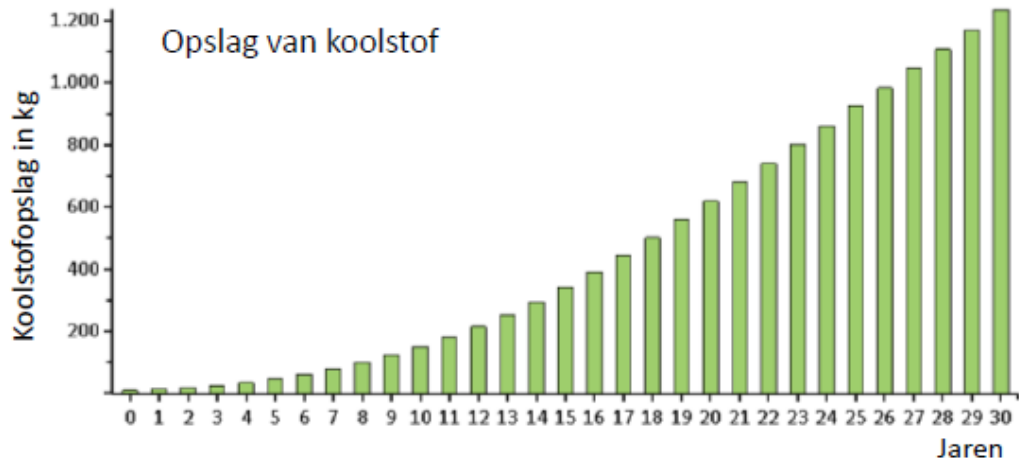
Duurzame of circulaire boomaanplant?

Liefst duurzaam aanplanten...

...ja maar;



i-Tree groeimodel baten; eerder ingrijpen is 'verlies' lijden



Verplanten is circulair...

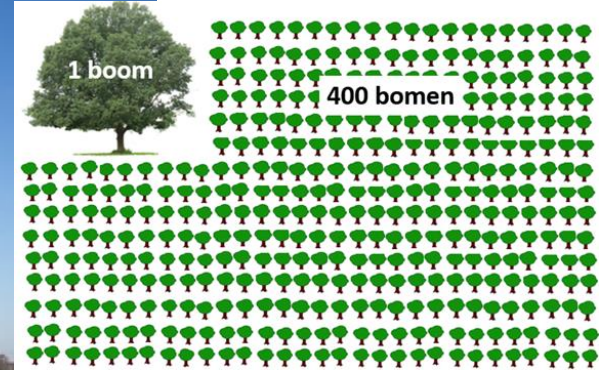
...ja maar;

- Verplanten is duur. Is dat zo?
- De uitval bij verplanten is hoog. Is dat zo?
- Oude bomen laten zich niet verplanten. Is dat zo?
- Verplanten kan alleen in de winter. Is dat zo?

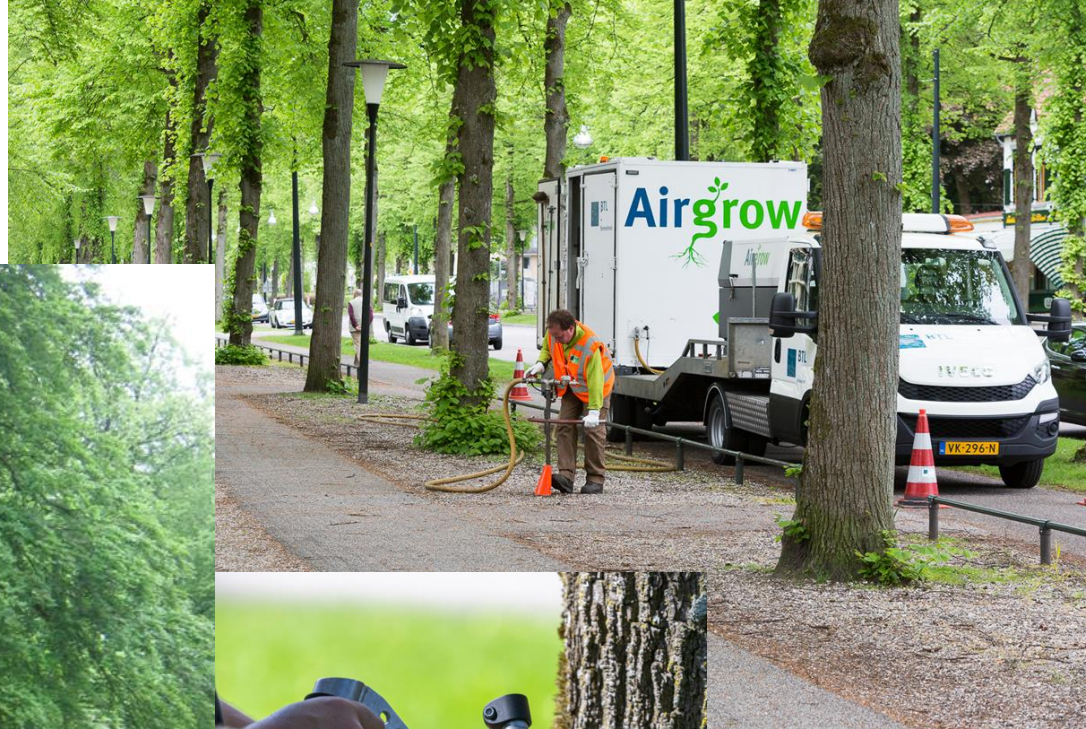
Verplanten Apeldoorn



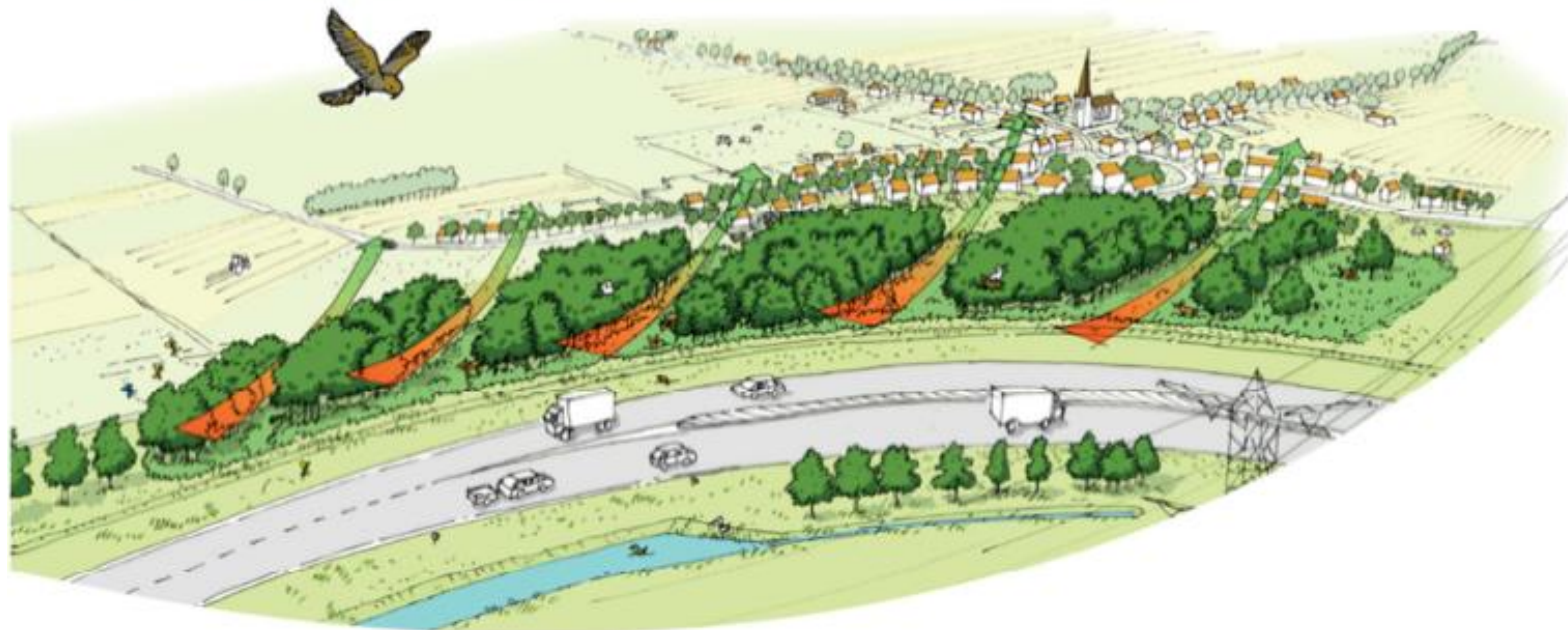
Verplanten Waddinxveen



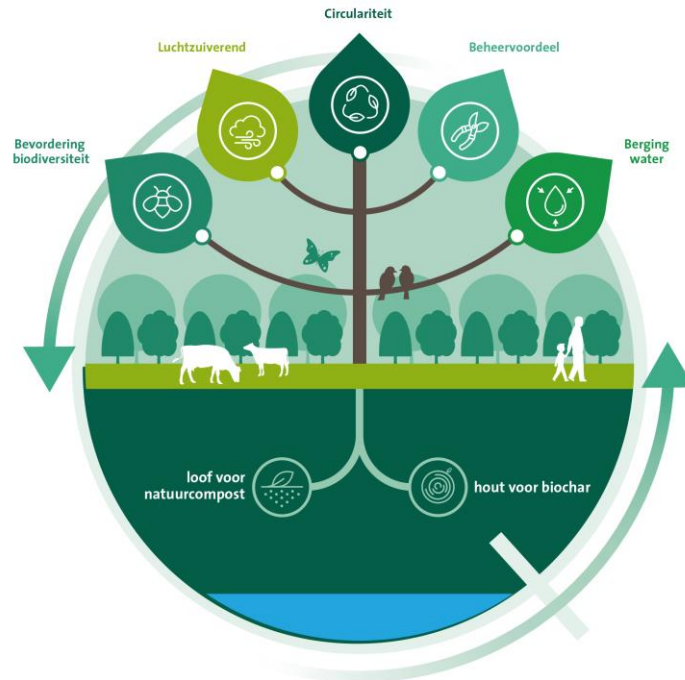
Vitaal houden oude bomen



CirQleaves als onderdeel van de oplossing



CirQleaves



Vragen???

Neem gerust contact op met Marc Lansink
van idverde Bomendienst

Mail: marc.Lansink@idverde.nl

Tel: 06-2096 1080